



# City Centre Action Plan

## Delivering the masterplan

City Centre Residents Group  
4 September 2023

Eke Panuku  
Development  
Auckland

Auckland  
Council  
Te Kauhāreka o Āhuru Māhara

Auckland  
Transport

Tātaki  
Auckland  
Unlimited

# Purpose

- Update on the City Centre Action Plan
- Areas of interest for city centre residents (noting it is all relevant)
- Opportunities to work in partnership with CCRG



# Collaborative effort: *internal and external*

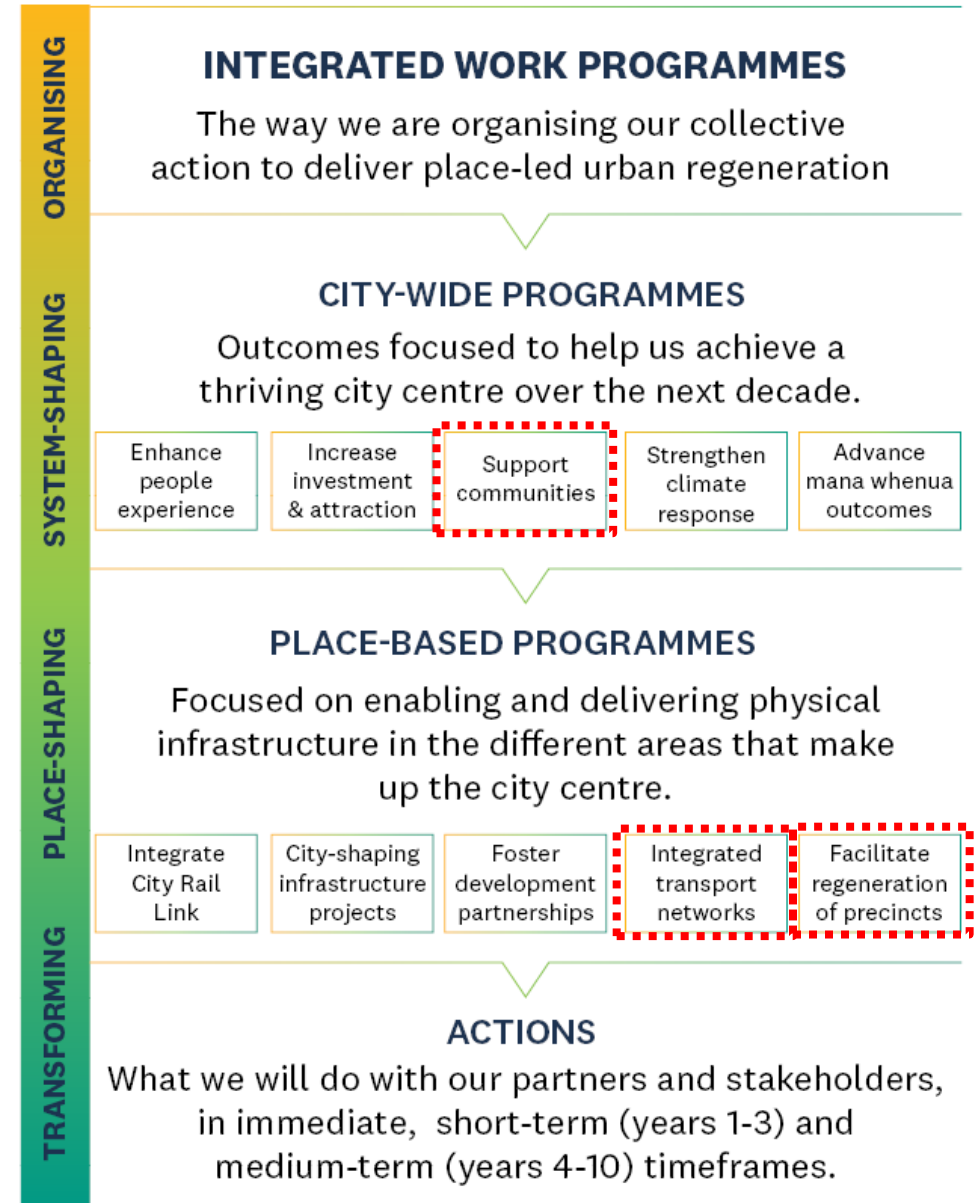


+ conversations with more than 30 different stakeholder groups

# City Centre Masterplan → Action Plan



# City Centre Masterplan → Action Plan



# 10 Outcomes



**Outcome 1: Tāmaki Makaurau - Our place in the world**  
Our vision is for a city centre that actively recognises and celebrates Auckland's historic heritage as a driver of positive change and placemaking.



**Outcome 2: Connected city centre**  
We aim to enable safe, healthy and sustainable travel options to improve people's access and choice of transport modes into and around the city centre.



**Outcome 3: Accessible and inclusive city centre**  
We want to achieve a city centre that is inclusive and welcoming to all in Tāmaki Makaurau.



**Outcome 4: Green city centre**  
By restoring our biodiversity and ecological systems (Mauri Tu) we will deliver a healthy and happy city centre.



**Outcome 5: Public life**  
Public space or realm is the glue that holds the city centre together. It is the canvas for public life. It needs to work well for all Aucklanders and visitors to Tāmaki Makaurau.



**Outcome 6: Residential city centre neighbourhoods**  
Auckland's city centre is an increasingly popular place to live. As the city centre population grows and matures, this outcome shapes the city centre's public realm, housing supply and social infrastructure to deliver a highly liveable city centre.



**Outcome 7: Quality built form**  
We want to deliver a well-designed and planned city centre.



**Outcome 8: Heritage defined city centre**  
Our vision is for a city centre that actively recognises and celebrates Auckland's historic heritage as a driver of positive change and place-making.



**Outcome 9: Sustainable city centre**  
Auckland city centre will address the challenges of global climate change and urban growth via urban design. This part of the CCMP is shaped by targets and direction from the Auckland Climate Action Framework.

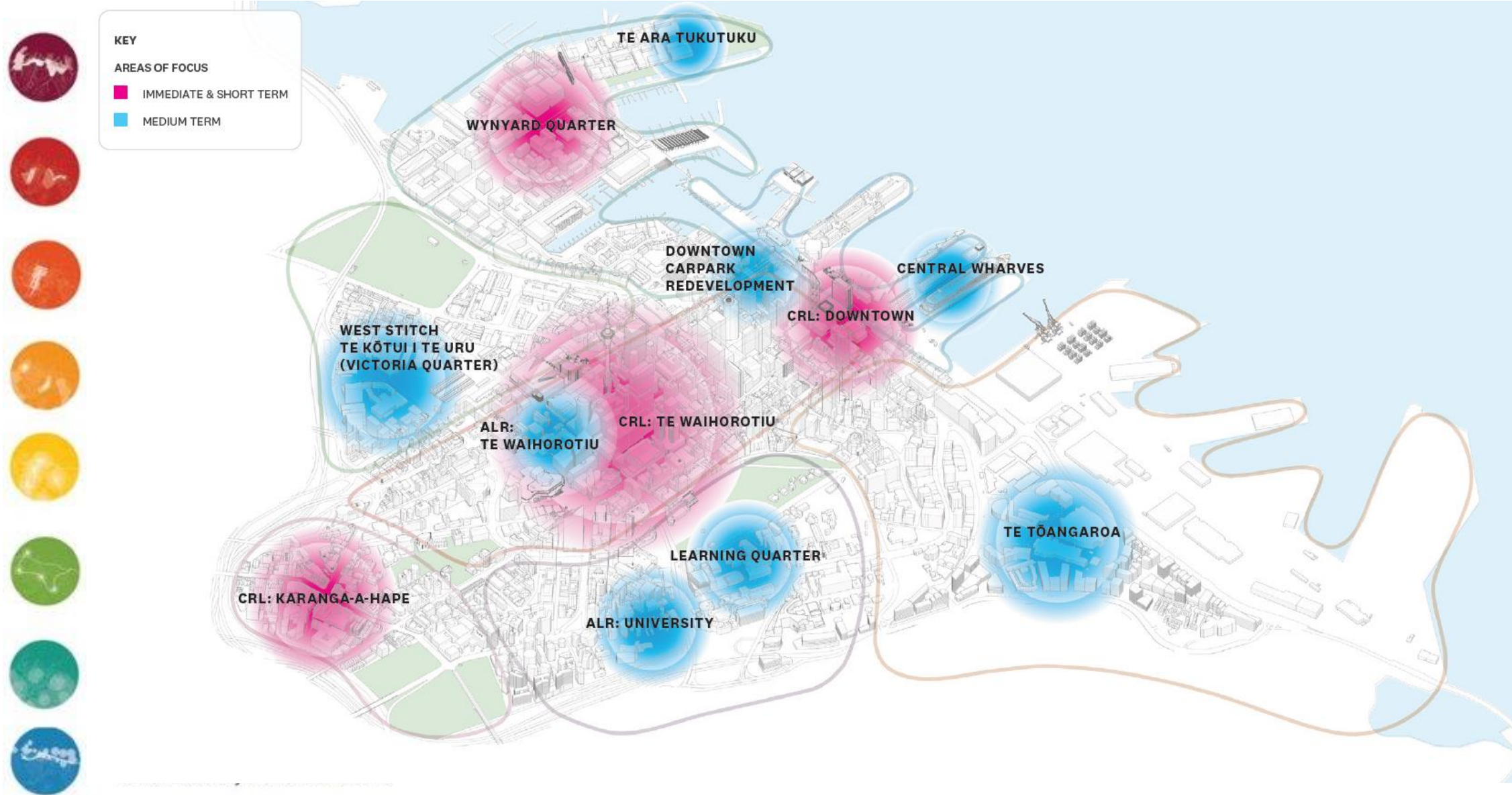


**Outcome 10: Prosperous city centre**  
We want to set out practical ways to develop the city centre so it can continue to thrive as an economic centre and cater for the needs of our diverse population.

## Implementation Actions

ACTION	MASTERPLAN OUTCOME	TIMEFRAME
<b>SUPPORT OUR RESIDENTIAL COMMUNITY</b>		
<b>3.8 Community spaces</b>		
Continue to support community connections using our free public community facilities, such as the central library and Ellen Melville Centre. Provide informal gathering places around city, such as Emily Place. Implement placemaking and community-based programmes.	3 Accessible and inclusive city centre	ONGOING
<b>3.9 Resident survey</b>		
Undertake the city centre residents survey on a three-yearly basis.	6 Residential city centre neighbourhoods	ONGOING
<b>3.10 Homelessness</b>		
Progress Housing First approach to address homelessness and wrap-around services to support vulnerable, high-needs people.	3 Accessible and inclusive city centre	ONGOING
<b>3.11 Night works policy</b>		
Review policies and practices for how we programme renewals and construction works in the city centre to reduce impact on city centre residents. In particular, the timing of works at night is lowering the quality of life for many residents in the city centre.	6 Residential city centre neighbourhoods	IMMEDIATE (2023-2024)

# 8 Transformational Moves



# Focus areas

1. Improving the **experience** of the city centre
2. Realising the full benefits of the **City Rail Link**
3. Supporting **residential growth** in the city centre
4. Advancing other **city-shaping projects**
5. Increasing **climate resilience**



## INTEGRATED WORK PROGRAMMES

The way we are organising our collective action to deliver place-led urban regeneration

### CITY-WIDE PROGRAMMES

Outcomes focused to help us achieve a thriving city centre over the next decade.

Enhance people experience

Increase investment & attraction

Support communities

Strengthen climate response

Advance mana whenua outcomes

### PLACE-BASED PROGRAMMES

Focused on enabling and delivering physical infrastructure in the different areas that make up the city centre.

Integrate City Rail Link

City-shaping infrastructure projects

Foster development partnerships

Integrated transport networks

Facilitate regeneration of precincts

### ACTIONS

What we will do with our partners and stakeholders, in immediate, short-term (years 1-3) and medium-term (years 4-10) timeframes.

## Outcome 6: Residential city centre neighbourhoods

- Quality and variety of new **public space**
- Quality and range of **housing** typologies
- Reduction in actual **crime** levels and fear of crime
- Expansion of community and **social infrastructure**
  - *Reflecting residents' needs, including the potential addition of a new urban school*
- **Homelessness** is rare, brief and non-recurring.



Support  
communities

Tautokona ngā hapori

# Action Plan:

## Support communities programme

- Growth in inner-city resident **population**
- Provision of **more facilities** for inner-city residents
- Foster a **sense of community**: community-led and council-led initiatives
- Provide **spaces to gather** for community events
- Office building **conversion** to residential
- Investigate residential population increase: **commercial partnerships, land amalgamation** etc
- Advocate for **inner-city primary school**; work with MoE
- Continue **supporting community spaces**: Ellen Melville Centre, Central City Library etc
- Foster and support **community-led initiatives**: cohesion, empowerment and capability
- Work with universities to support to **attract students** to live in the city centre



## INTEGRATED WORK PROGRAMMES

The way we are organising our collective action to deliver place-led urban regeneration

### CITY-WIDE PROGRAMMES

Outcomes focused to help us achieve a thriving city centre over the next decade.

Enhance people experience

Increase investment & attraction

Support communities

Strengthen climate response

Advance mana whenua outcomes

### PLACE-BASED PROGRAMMES

Focused on enabling and delivering physical infrastructure in the different areas that make up the city centre.

Integrate City Rail Link

City-shaping infrastructure projects

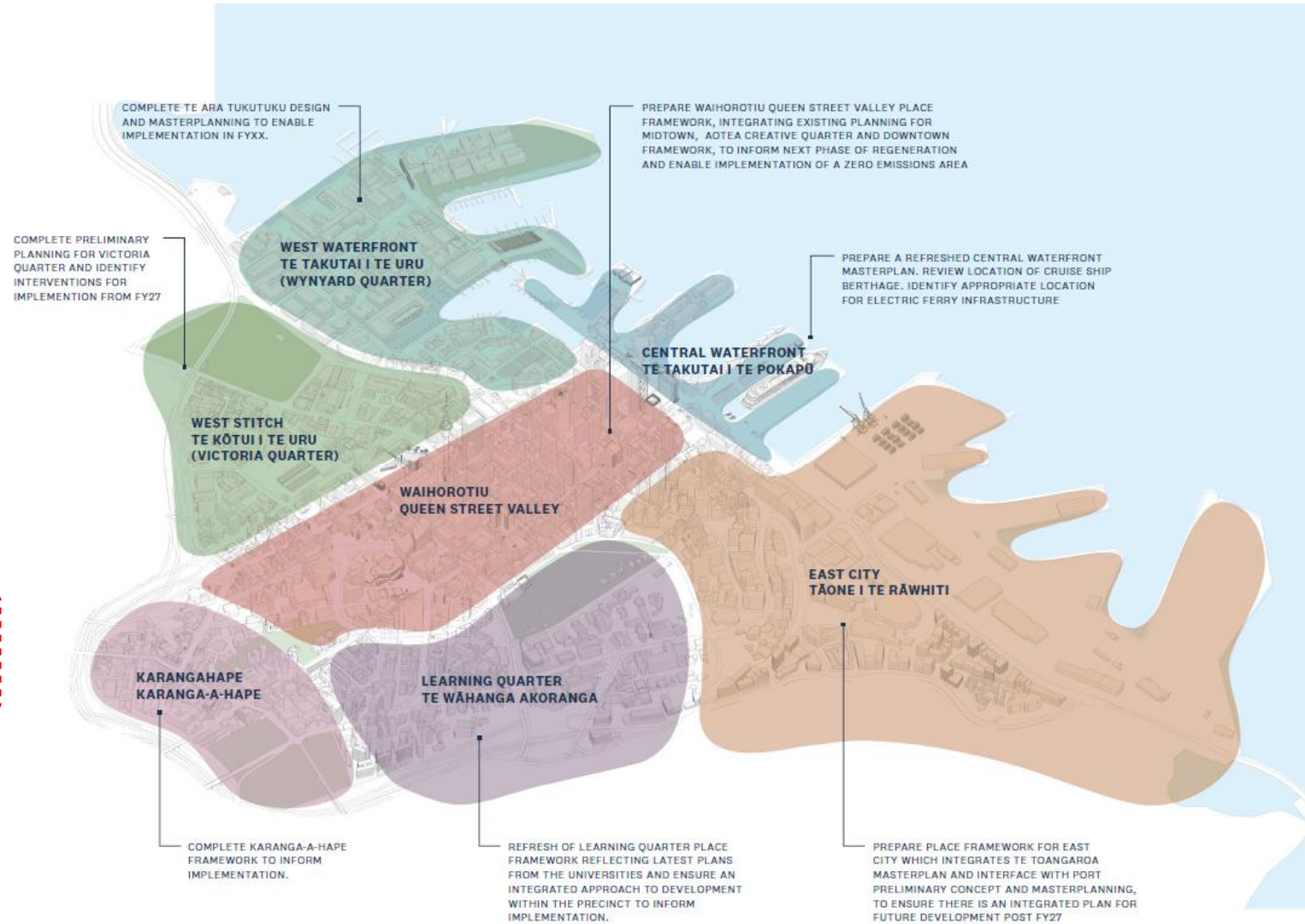
Foster development partnerships

Integrated transport networks

Facilitate regeneration of precincts

### ACTIONS

What we will do with our partners and stakeholders, in immediate, short-term (years 1-3) and medium-term (years 4-10) timeframes.





Facilitate  
regeneration of  
our city centre  
precincts

Whakahaeretia te  
haumanutanga o ngā pae o  
te pokapū ā-tāone



# Action Plan:

## Regenerate Precincts

- Place-led approach encouraging **integrated** working
- Maintain **existing assets and infrastructure**; link to CCMP outcomes
- Apply **Te Ao Māori** principles in regenerative development
- Activity/ vibrancy along **Queen Street**
- Harbour Edge Stitch: **public access to the Waitematā**
- Connections and **green links** across city centre and between open spaces

## INTEGRATED WORK PROGRAMMES

The way we are organising our collective action to deliver place-led urban regeneration

### CITY-WIDE PROGRAMMES

Outcomes focused to help us achieve a thriving city centre over the next decade.

Enhance people experience

Increase investment & attraction

Support communities

Strengthen climate response

Advance mana whenua outcomes

### PLACE-BASED PROGRAMMES

Focused on enabling and delivering physical infrastructure in the different areas that make up the city centre.

Integrate City Rail Link

City-shaping infrastructure projects

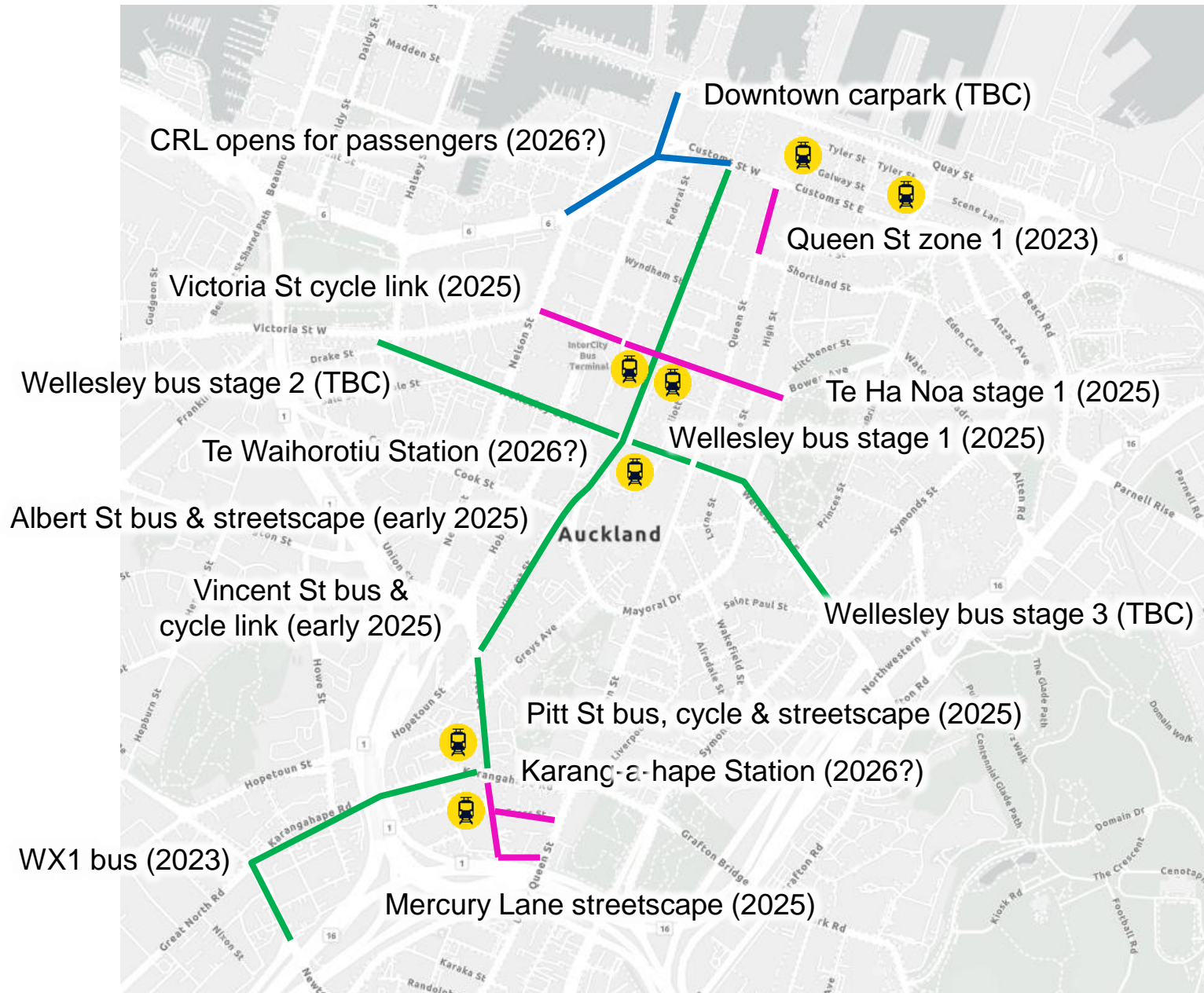
Foster development partnerships

Integrated transport networks

Facilitate regeneration of precincts

### ACTIONS

What we will do with our partners and stakeholders, in immediate, short-term (years 1-3) and medium-term (years 4-10) timeframes.





Deliver integrated transport networks

Mahia ngā kōtuinga whakaururu mō te tūnuku



# Future rapid transit

- Four rail lines, including Southern Express
- Doubling the number of Aucklanders within 30 minutes travel of the city centre
- 3 minutes: Maungawhau to Karang-a-hape
- 9 minutes: Maungawhau Station to Waitematā Station

## Existing Connections

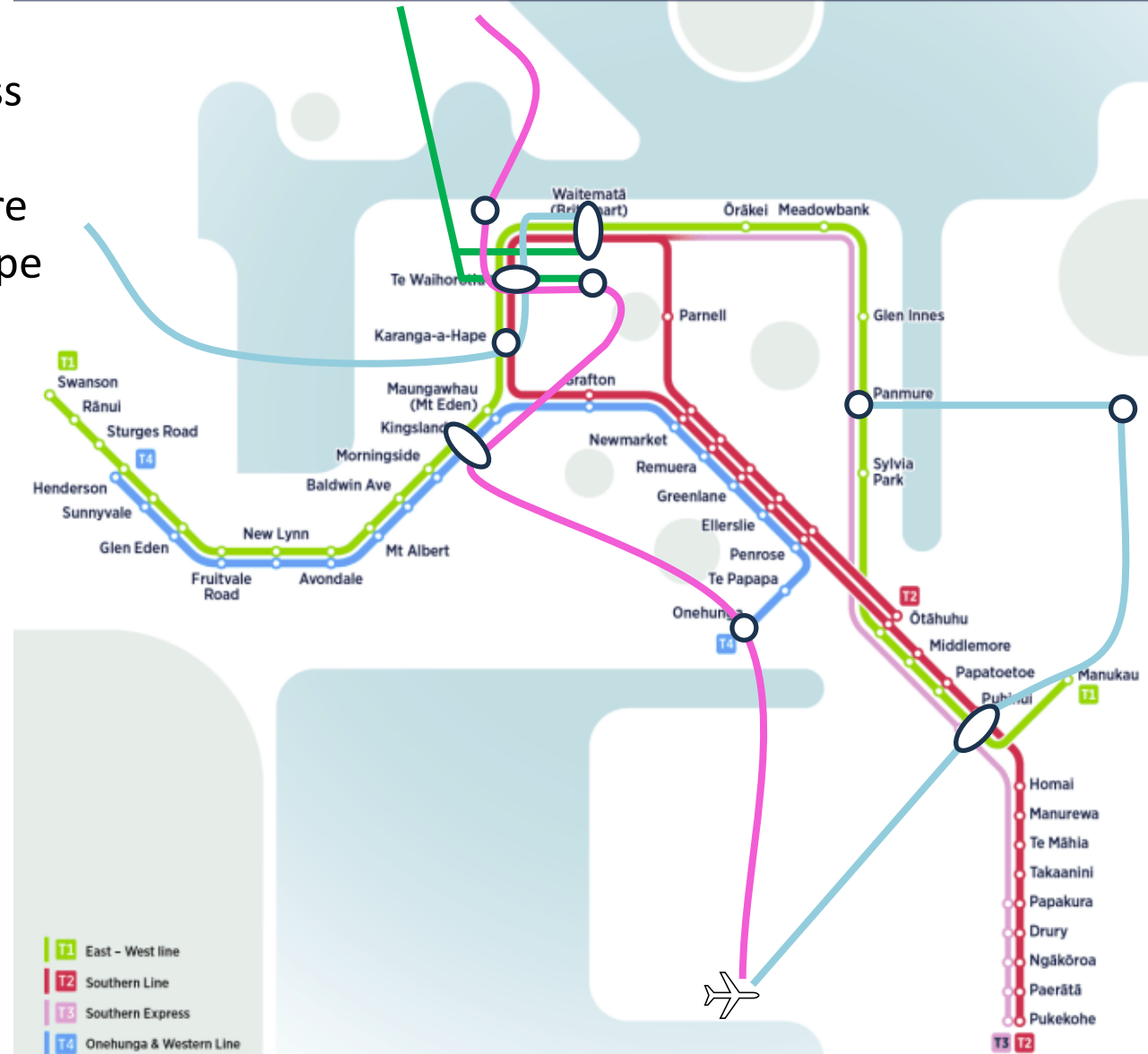
- North Shore buses
- Airport express bus from Puhinui

## Future Connections

- Western Express WX1 bus (November 2023)
- Eastern Busway
- Manukau-Botany Busway
- Light Rail: City to Airport
- Light Rail: City to North Shore

# Future Auckland Train Network

INDICATIVE SERVICE PLAN AFTER CITY RAIL LINK OPENS





*Deliver integrated  
transport networks*

Mahia ngā kōtuinga  
whakaururu mō te tūnuku



# *Action Plan:*

## Integrated Transport Network

- Improve operation and **reliability**
- Manage **carparking** and allocation of **kerbside**
- Giving people **choice**
- Establishing **local traffic zones**
- Transport infrastructure and modes **appropriate to setting**

**KEY**

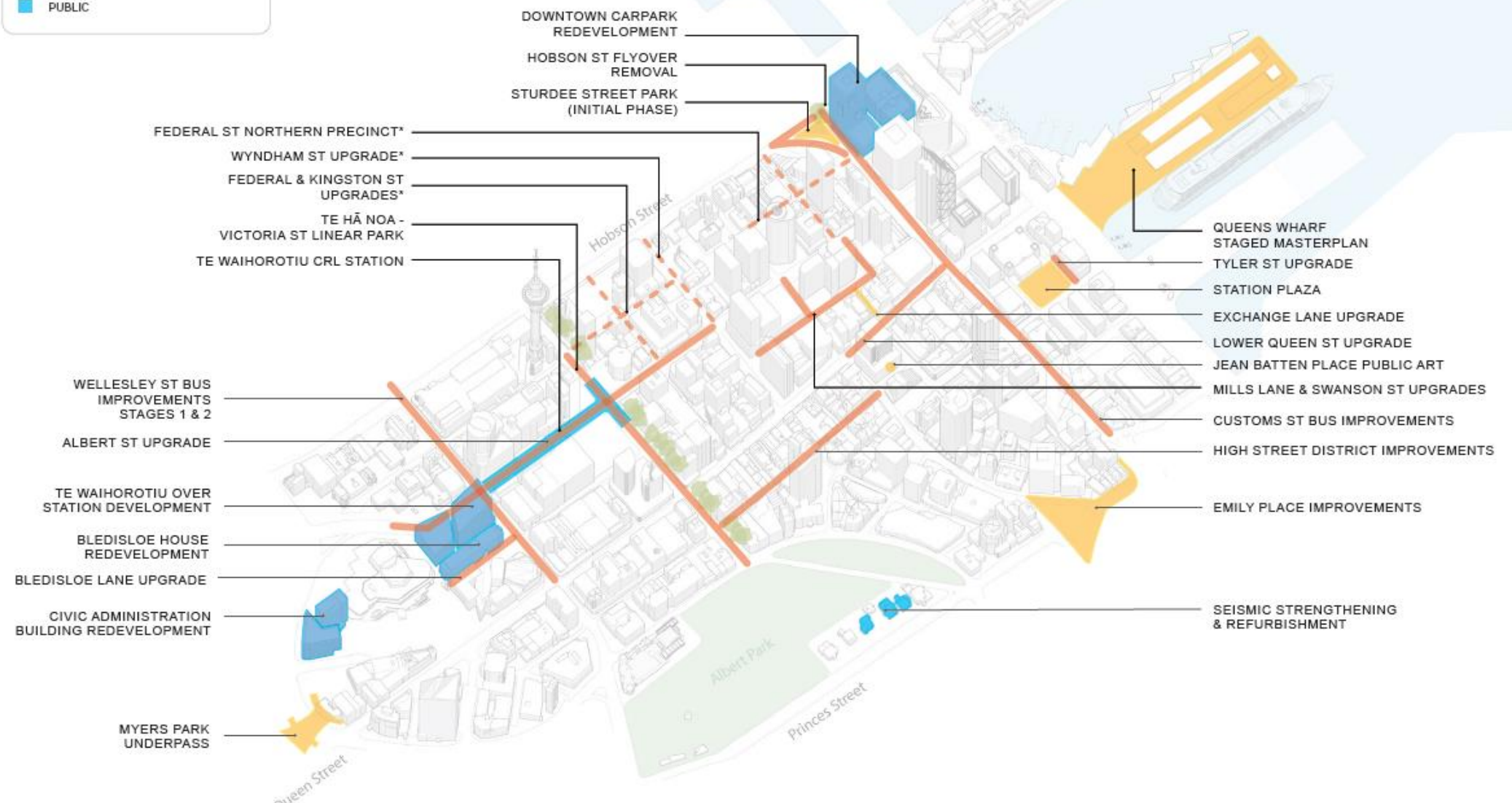
**PUBLIC REALM**

- STREETS
- PUBLIC SPACE

\* TIMING SUBJECT TO ADJACENT DEVELOPMENT

**BUILDINGS**

- DEVELOPMENT PARTNERSHIPS
- PUBLIC





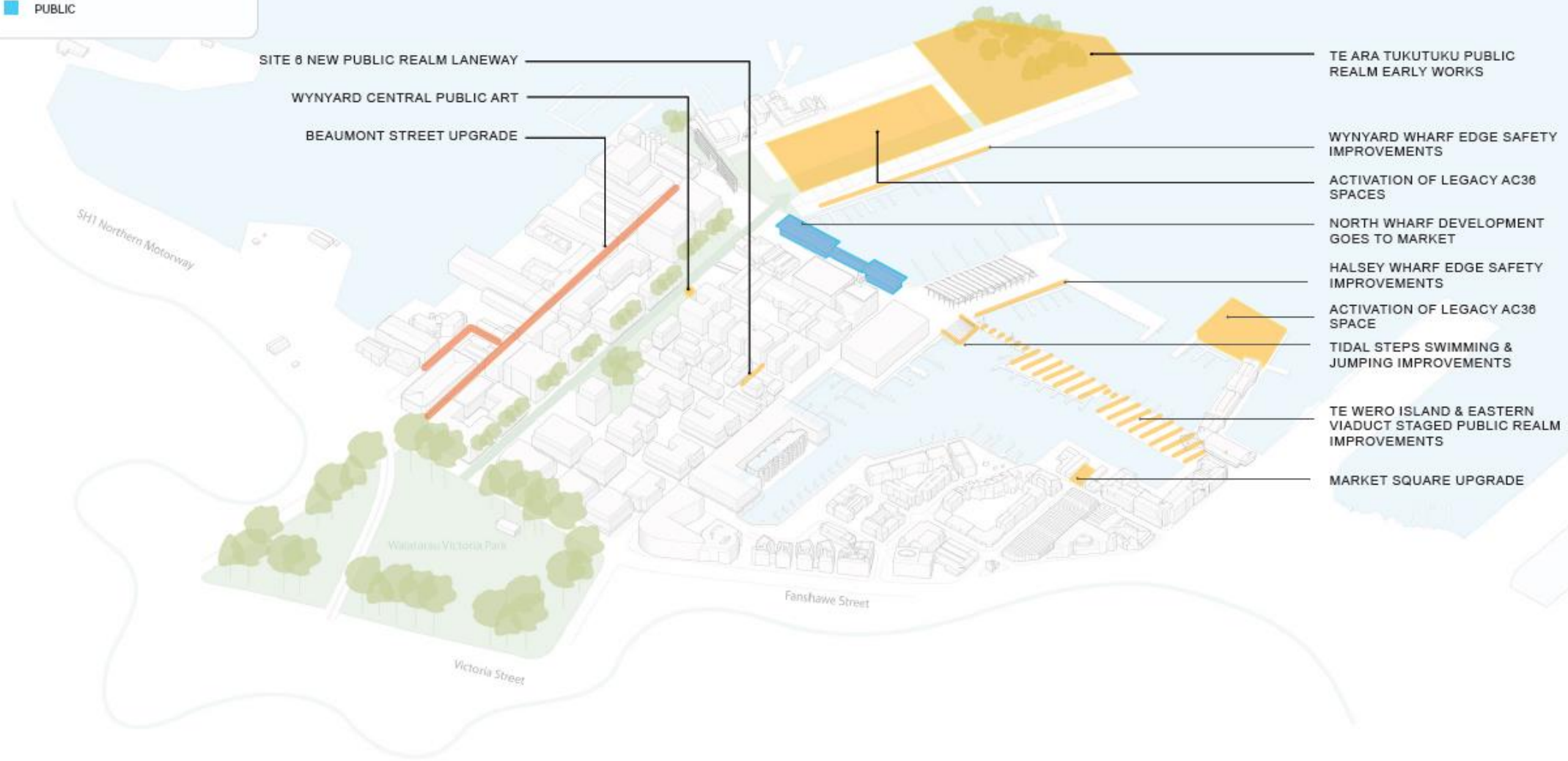
**KEY**

**PUBLIC REALM**

- STREETS
- PUBLIC SPACE

**BUILDINGS**

- DEVELOPMENT PARTNERSHIPS
- PUBLIC



SITE 6 NEW PUBLIC REALM LANEWAY

WYNYARD CENTRAL PUBLIC ART

BEAUMONT STREET UPGRADE

TE ARA TUKUTUKU PUBLIC REALM EARLY WORKS

WYNYARD WHARF EDGE SAFETY IMPROVEMENTS

ACTIVATION OF LEGACY AC38 SPACES

NORTH WHARF DEVELOPMENT GOES TO MARKET

HALSEY WHARF EDGE SAFETY IMPROVEMENTS

ACTIVATION OF LEGACY AC38 SPACE

TIDAL STEPS SWIMMING & JUMPING IMPROVEMENTS

TE WERO ISLAND & EASTERN VIADUCT STAGED PUBLIC REALM IMPROVEMENTS

MARKET SQUARE UPGRADE

SH1 Northern Motorway

Waiatarau Victoria Park

Victoria Street

Fanshawe Street

**KEY**

**PUBLIC REALM**

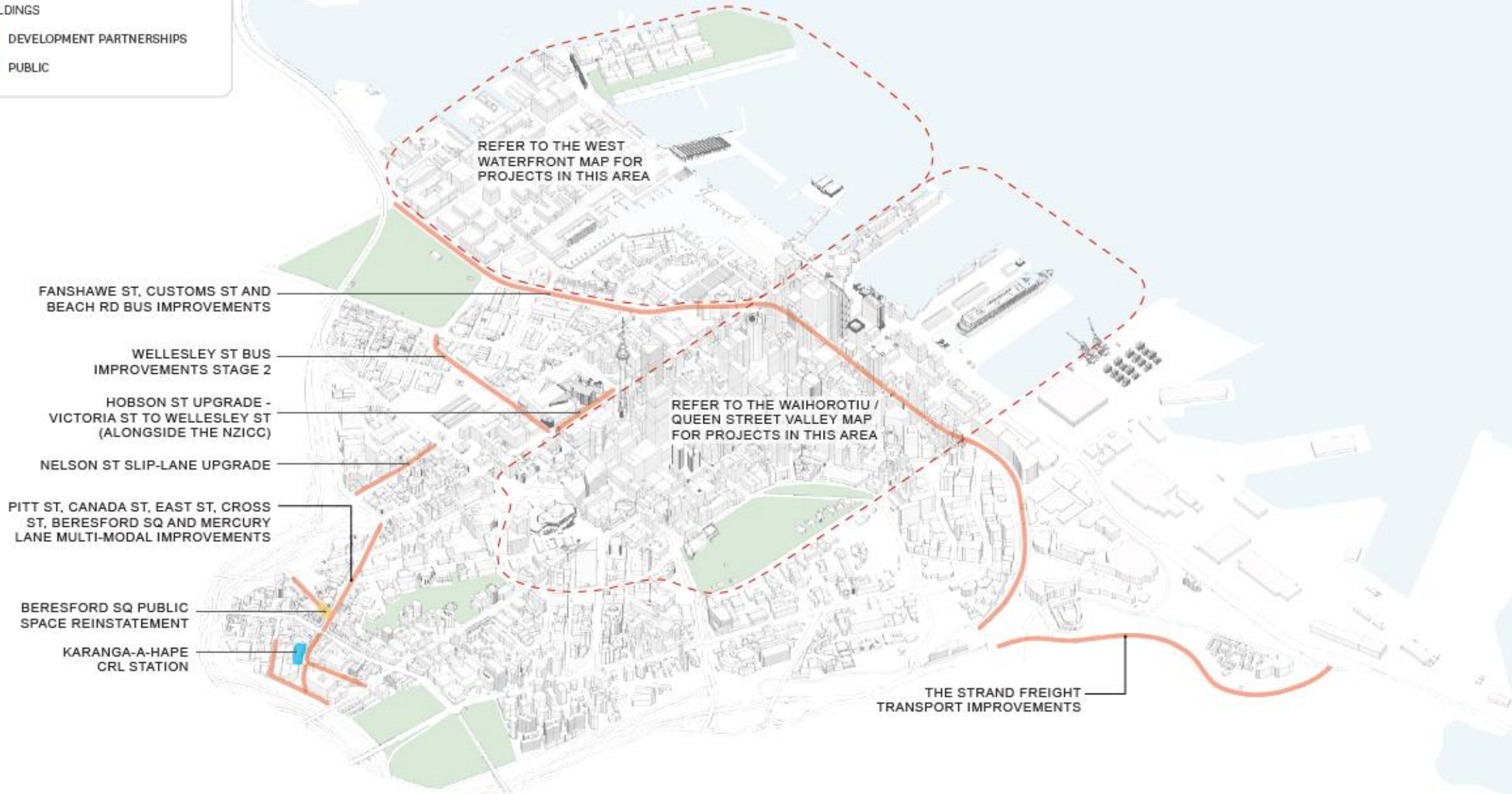
STREETS

PUBLIC SPACE

**BUILDINGS**

DEVELOPMENT PARTNERSHIPS

PUBLIC



REFER TO THE WEST WATERFRONT MAP FOR PROJECTS IN THIS AREA

FANSHAWE ST, CUSTOMS ST AND BEACH RD BUS IMPROVEMENTS

WELLESLEY ST BUS IMPROVEMENTS STAGE 2

HOBSON ST UPGRADE - VICTORIA ST TO WELLESLEY ST (ALONGSIDE THE NZICC)

NELSON ST SLIP-LANE UPGRADE

PITT ST, CANADA ST, EAST ST, CROSS ST, BERESFORD SQ AND MERCURY LANE MULTI-MODAL IMPROVEMENTS

BERESFORD SQ PUBLIC SPACE REINSTATEMENT

KARANGA-A-HAPE CRL STATION

REFER TO THE WAIHOROTIU / QUEEN STREET VALLEY MAP FOR PROJECTS IN THIS AREA

THE STRAND FREIGHT TRANSPORT IMPROVEMENTS




Support  
communities

Tautokona ngā hapori



# Collaboration

- Multi-agency approach to **safety**: city centre task force, CPTED audits
- **Community spaces**, placemaking and community-based programmes
- **Night works policy**
- **Naming** of city centre precincts/neighbourhoods
- Greening and **biodiversity**, community-led initiatives e.g. Balcony to Bay
- Supporting **growing resident population**, welcoming new residents and integration
- **Eye and ears** on the ground and vertical villages: what's working, what needs attention
- **Giving a voice** for city centre residents; providing ideas
- Helping us evolve the way we **engage**

An aerial photograph of a city skyline at dusk, viewed from across a large body of water. The sky is a deep, dark blue with some lighter clouds. The city lights are visible, including a prominent tower. In the foreground, a boat's wake is visible on the water.

Thank you for

Your **Time**

Your **Insight**

Your **Support**

Our **Exciting future...**