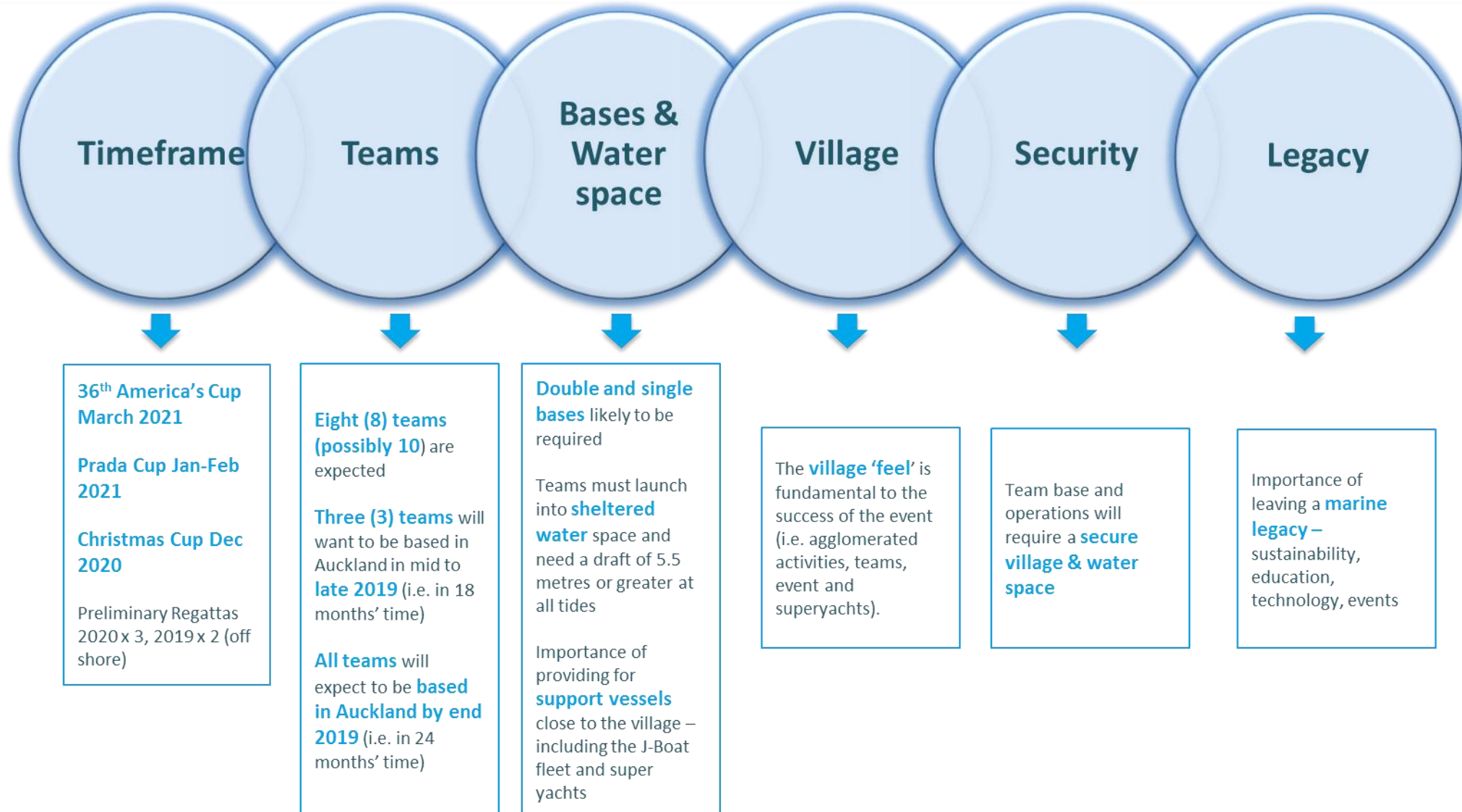


# America's Cup 36

## Auckland, New Zealand

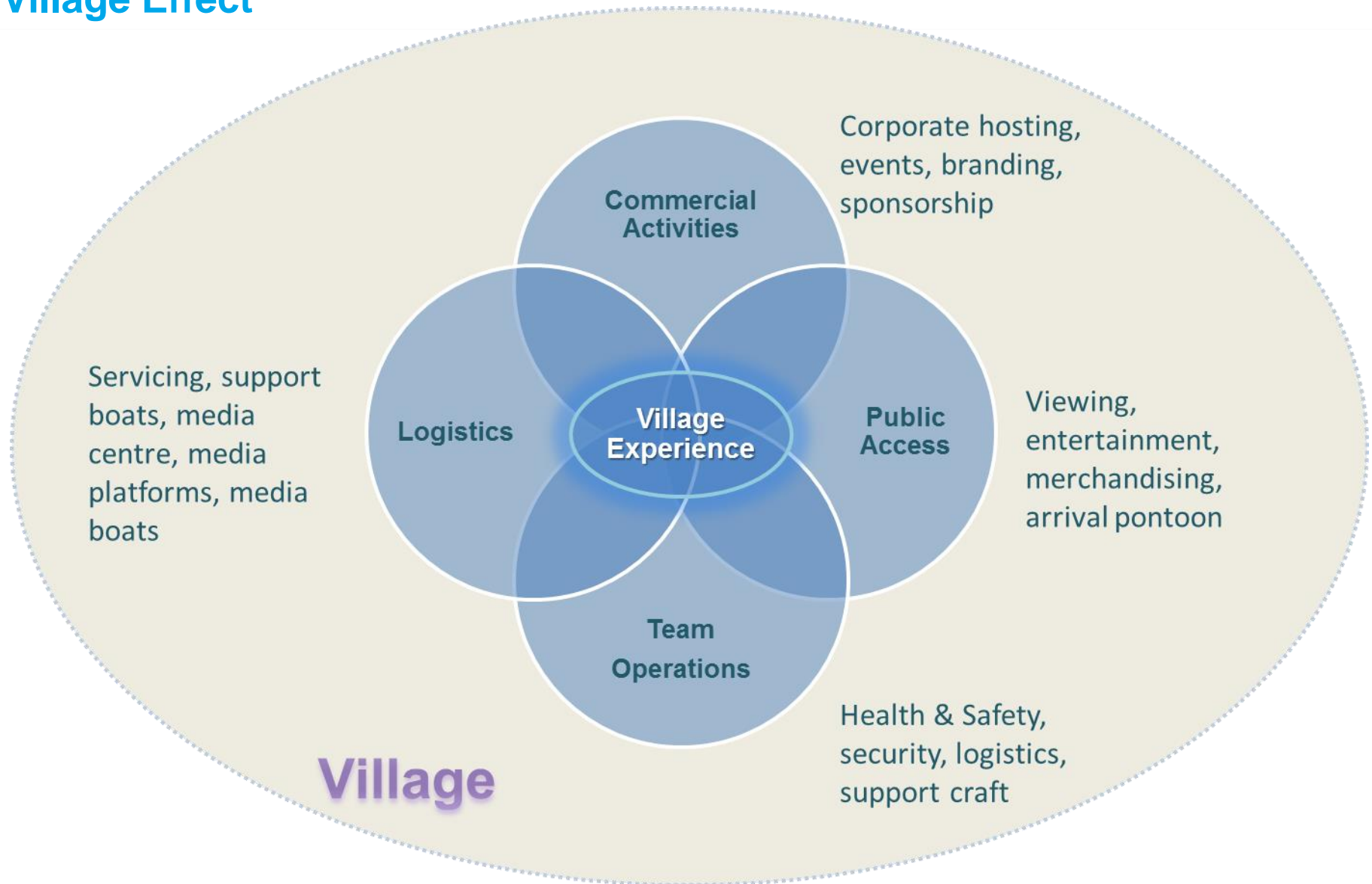
**Stakeholder update**  
**19 December 2017**

# Key Assumptions



# Lessons Learned

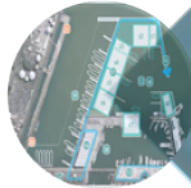
## Village Effect



# Evaluation Criteria

## Decision Making Criteria Parameters

### CRITERIA CATEGORIES



#### Delivery

can the bases be delivered in the timeframe required?



#### Event

the extent to which the bases provide the best outcome for servicing the needs of AC36 event



#### Legacy

the extent to which any investment delivers a sustainable benefit beyond the event itself



#### Business as usual

the impact on others prior to, during and post event

# Governing Body Meeting: 23 November 2017



## Wynyard Point Summary

- Option responded to goal of no incursion into the Harbour
- Base locations on western side of Wynyard Wharf subject to unsuitable wave conditions
- Site 18 not preferred as a development site for marine refit. Development proposal for the site being considered .
- Complex challenges to resolve on proximity to hazardous substance
- Cost of xx for infrastructure and event overlay
- Additional costs likely for negotiating with Wynyard Point marine and land based tenants



## Wynyard Basin Summary

- **Preferred Option for Auckland Council**
- Accepted as a workable option for ERNZ
- Still some challenges and risks to resolve through design to consent
- Cost of xx for infrastructure and event overlay
- Additional costs likely for negotiating with Wynyard Point Marine tenants



# Additional Wynyard Point Option (post 23 November)



## Wynyard Point Variant Summary Challenges

- Increases the risk of
  - Delivery timeframes, due to the complexities of existing lease requirements and the further work required to assess the contamination issues on land
  - Cost, due to the likely need to cease or move adjoining hazardous substances operators
- Cannot contribute in the longer term as legacy for future Americas Cup events (post 2022), as this land is earmarked for a Headland Park
- Does not provide enough land and water space for eight team bases (as required)

# Recommended Option



## Wynyard Basin Delivery

- Construction time of (approx 14-16 months). Note that construction occurring across multiple sites impacts on complexity and potentially timing.
- ⊗ Stakeholder opposition to a wharf extension into Waitemata Harbour.
- ⊗ Displaces existing tenant on Wynyard Wharf. Relocation requires their agreement. Timeframe unknown.
- Requires dredging with limited options for disposal.

## Wynyard Basin Event

- Good opportunity for public engagement with teams activity.
- Location in close proximity to existing services and facilities in Wynyard.
- Clustered model delivers some village benefits (operations, logistics and security).
- Can provide for 8 J class yachts and 9 super yachts in Wynyard Basin (approx.)
- ⊗ Tide and wind range mitigations currently under investigation for the Wynyard Basin.

## Wynyard Basin Legacy

- Wharf structure in this location consistent with the intent of the Waterfront Plan 2012.
- Increased public access to and on the water.
- New sheltered water space to provide for the growth of the recreational, tourist and commercial marine (including fishing) sector and events in the Wynyard Basin.
- Relocating Sealink can accelerate Wynyard Wharf redevelopment .

# Stakeholder Engagement (November-December)

## Mana Whenua

- Governance discussions
- Co-ordination of engagement
- Resource consent process

## Government

- Due diligence on Wynyard Point (variant) Option

## Local Boards

- Update on process and outcomes

## ETNZ

- Design refinements
- Operational issues

## RNZYS

- Design refinements
- Operational issues

## WQ tenants

- Update on process and timing
- Likely impacts and opportunities

## Key stakeholders

- Update on process and timing
- Likely impacts and opportunities



# Team Base Location and Infrastructure

ETNZ win  
(27 Jun 2017)

